

B 40 - Torri Qalet Marku



Oil Pattern Distance:	40 Feet	Reverse Brush Drop:	30 Feet	Oil Per Board:	50 uL
Forward Oil Total:	13.05 mL	Reverse Oil Total:	11.3 mL	Volume Oil Total:	24.35 mL
Forward Boards Crossed:	261 Boards	Reverse Boards Crossed:	226 Boards	Total Boards Crossed:	487 Boards

	Start	Stop	Loads	Speed	Crossed	Start	End	Feet	T.Oil
1	2L	2R	2	10	74	0.0	1.4	1.4	3700
2	7L	7R	2	14	54	1.4	5.3	3.9	2700
3	10L	10R	2	14	42	5.3	9.2	3.9	2100
4	11L	11R	3	18	57	9.2	16.8	7.6	2850
5	12L	12R	2	18	34	16.8	21.9	5.1	1700
6	2L	2R	0	18	0	21.9	28.0	6.1	0
7	2L	2R	0	26	0	28.0	34.0	6.0	0
8	2L	2R	0	30	0	34.0	40.0	6.0	0

Conditioner:
Type In or Select
One

TransferType:
Type In or Select
One

Forward



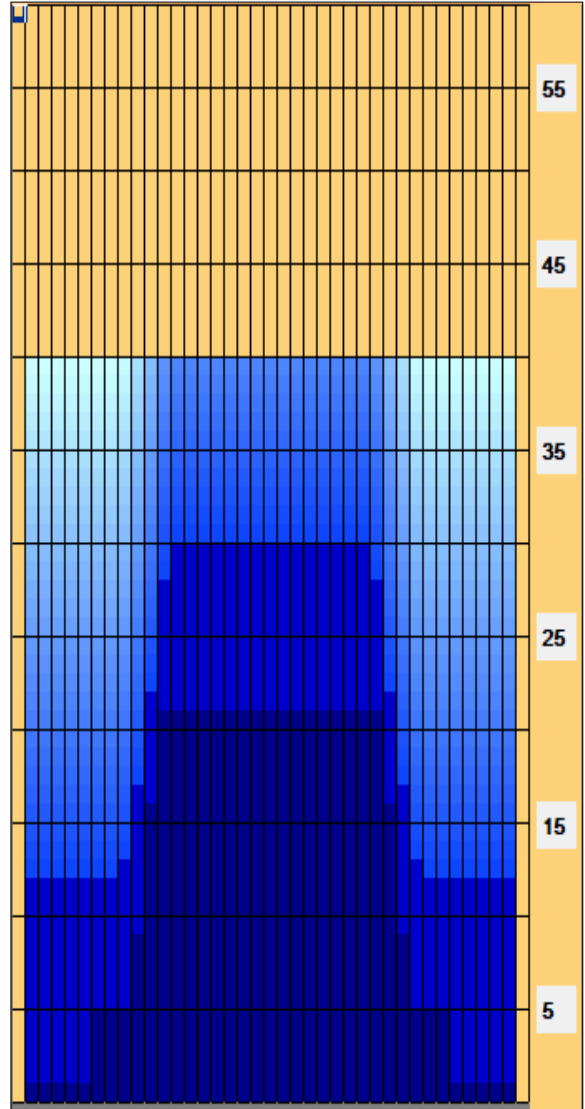
Reverse



Combined



Buff



Forward Reverse More

	Start	Stop	Loads	Speed	Crossed	Start	End	Feet	T.Oil
1	2L	2R	0	30	0	40.0	30.0	-10.0	0
2	13L	13R	1	18	15	30.0	27.5	-2.5	750
3	12L	12R	2	18	34	27.5	22.4	-5.1	1700
4	11L	11R	2	18	38	22.4	17.3	-5.1	1900
5	10L	10R	2	14	42	17.3	13.4	-3.9	2100
6	9L	9R	1	14	23	13.4	11.5	-1.9	1150
7	2L	2R	2	14	74	11.5	7.6	-3.9	3700
8	2L	2R	0	10	0	7.6	0.0	-7.6	0

Forward Reverse More

Saint Mark's Tower (Maltese: Torri ta' San Mark), originally known as Torre del Cortin and also known as Qalet Marku Tower (Maltese: Torri ta' Qalet Marku), is a small watchtower in Baħar iċ-Ċagħaq, limits of Naxxar, Malta. It was completed in 1658 as the third of the De Redin towers. The tower follows the standard design of the De Redin towers, having a square plan with two floors and a turret on the roof.

Item	3L-7L:18L-18R	8L-12L:18L-18R	13L-17L:18L-18R	18L-18R:17R-13R	18L-18R:12R-8R	18L-18R:7R-3R
Description	Outside Track:Middle	Middle Track:Middle	Inside Track:Middle	Middle: Inside Track	Middle:Middle Track	Middle:Outside Track
Track Zone Ratio	4.77	1.75	1	1	1.75	4.77

